



COMMAND **GEMINI^{TF}**

Tool Fixtures

Lock and Unlock in *Seconds!*

Performance *measured by you*



Gemini Tool Fixtures

► Command Tooling System's NEW tool fixtures revolutionizes the market with just a *click of a button!* Literally change out your tool in seconds. These durable Gemini fixtures are the perfect compliment for any work bench. With four modern design options to choose from, the versatility and reliability are endless. Plus, it holds all types of CT40 tooling. These new innovative products provides you the strength wanted, durability you depend on, and the ease of use needed.

Quick and Easy Lock-in System

- + Fastest and easiest on the market today. Securely locks tool in place. Locks and unlocks in *seconds!*

Made in the U.S.A.

- + Entirely produced and assembled right here in the United States with all domestic materials.

4 Versatile Layouts to Choose From

- + Any of these base plates can be adapted to numerous different functions.

Economical





- + Innovative and affordable for all your machining centers. Great value to the amount of time and effort needed for changing out tooling.

Quality Material

- + Laser cut, corrosion resistant, thick steel base plate. Anodized aluminum ring with stainless steel buttons.

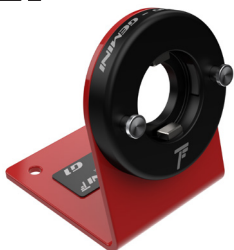
All Replacement Parts Available

- + No need to worry about parts breaking but, if a need be, all specific parts are sold separately.

Part Number	Product Code	Product Size	Dimensions	Layout
XHFB-C104	G1	CT40	6.0"H x 4.75"W	
XHFB-C204	G2	CT40	6.40"H x 4.75"W	
XHFB-C304	G3	CT40	6.0"H x 4.75"W	
XHFB-C404	G4	CT40	5.5"H x 4.75"W	

4 Versatile Fixture Options

G1



Ease of access with full visibility. Classic, optional-friendly layout.

G2



Ergonomic and unique design for ease of use.

G3



Classic and multi-functional. Fast and secure design.

G4



Duplex features horizontal and vertical clamping. Easy access to front and back end of the tool fixture.

Ease of Use

- ▶ Fastest and easiest change-out of tooling on the market today! Gemini's heavy-duty construction make this tool fixture extremely rigid to endure extreme forces without causing any damage. Each tool can be locked-in easily, quickly, and precisely set with just the push of two buttons... it doesn't get any *easier* or *faster* than that.



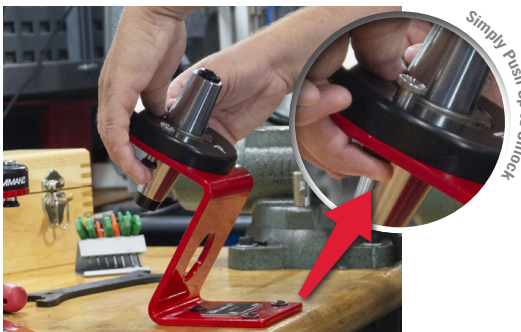
Step 1: Insert Tool

- + Place tooling inside tool fixture.



Step 2: Lock-in System

- + Place thumbs on both buttons. Push down to securely and accurately lock-in tool.



Step 3: Unlock Tool

- + Place fingers on each securely locked button. Push both buttons upward to quickly and easily unfasten tool.



Step 4: Remove Tool

- + Easily remove calibrated tool... *it's that easy!*

Replacement Kits

- ▶ Command's Gemini replacement kits fit all configurations of units G1, G2, G3, and G4. See chart below for ordering specific parts.

Part Number	Description
XHFB-K001	Ring Kit ; Fits: G1, G2, G3, G4 Includes: Full Clamping Unit without Base Plate
XHFB-K002	Button Kit ; Fits: G1, G2, G3, G4 Includes: 2 Buttons, Securing Screws, O-ring
XHFB-K003	Wedge Kit ; Fits: G1, G2, G3, G4 Includes: Wedge, Slider, 2 Springs
XHFB-0104	G1 Base Plate Only
XHFB-0204	G2 Base Plate Only
XHFB-0304	G3 Base Plate Only
XHFB-0404	G4 Base Plate Only



Ring Kit: XHFB-K001



Button Kit: XHFB-K002



Wedge Kit: XHFB-K003



G1 Base Plate:
XHFB-0104



G2 Base Plate:
XHFB-0204



G3 Base Plate:
XHFB-0304



G4 Base Plate:
XHFB-0404





Command Tooling Systems

13931 Sunfish Lake Blvd.
Ramsey, MN 55303 USA

PH 800.328.2197 // 763.576.6910
FX 800.555.7694 // 763.576.6911

SUPPORT@COMMANDTOOL.COM
COMMANDTOOL.COM

PROUDLY MADE IN THE U.S.A.

