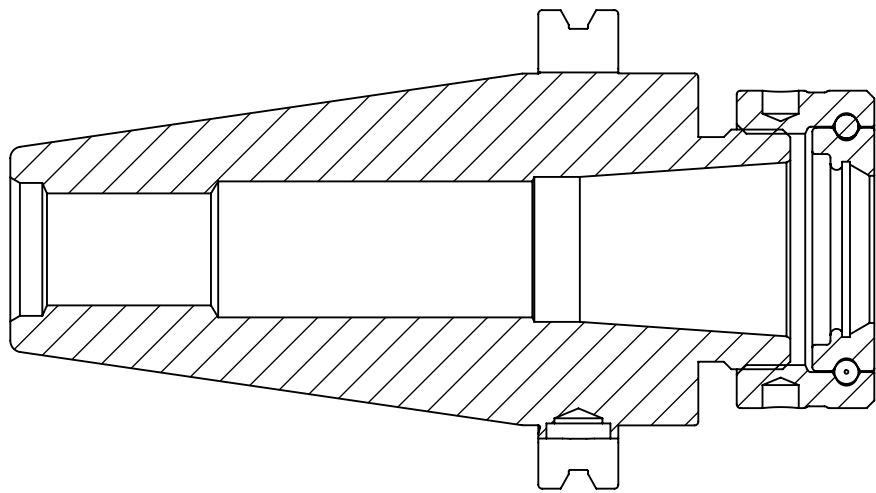
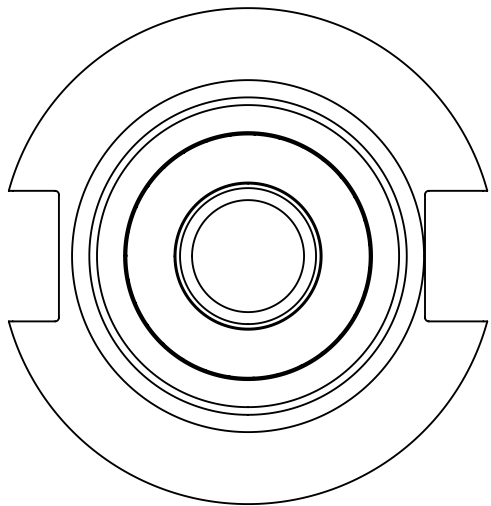
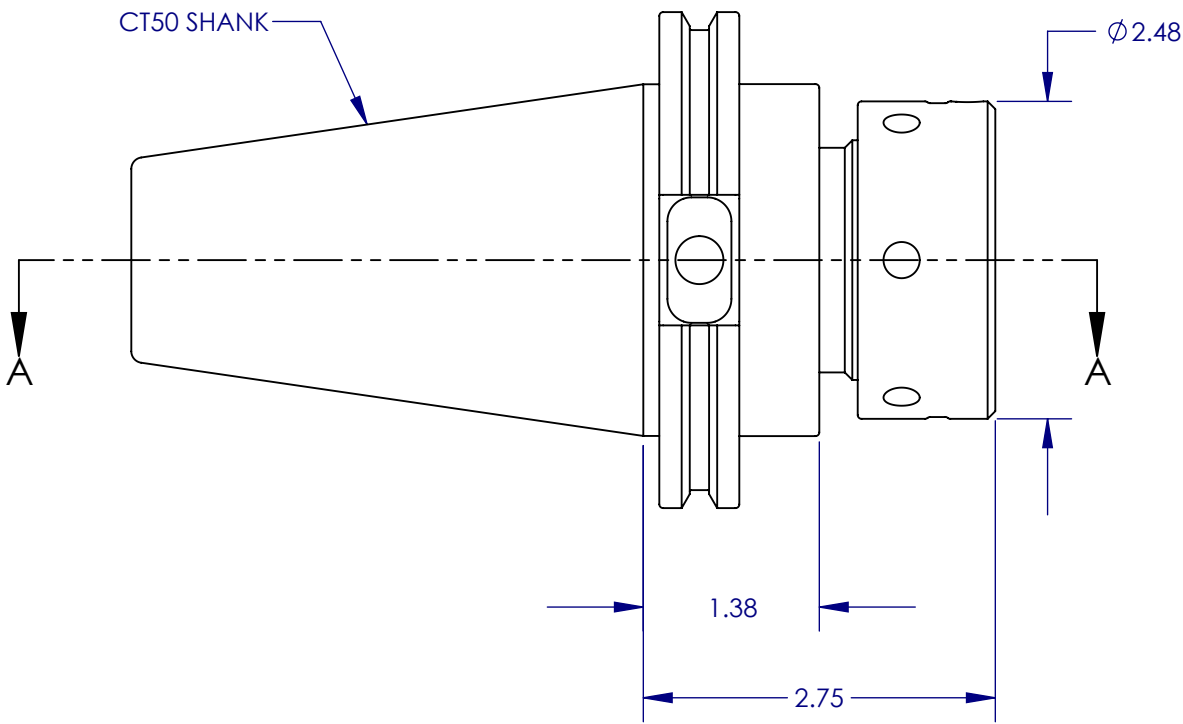
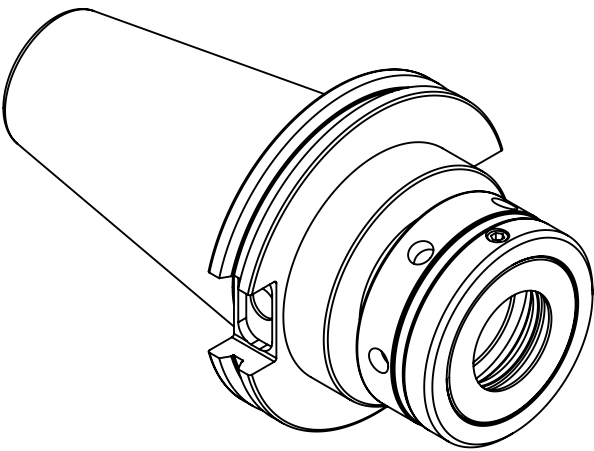



DRAWING NUMBER		REVISION		DESCRIPTION OF CHANGE		DATE		ECO NUMBER		APPROVED BY	
C6C3-1000		B		MODIFIED COMPONENT		2/28/2012		-		S. THAO	



SECTION A-A



PART NUMBER		DRAWING NUMBER	
C6C3-1000		C6C3-1000	
		CT50 TG100 CC 2.750 AGL	
		MODEL STATE FINISHED ASSEMBLY	
		DESIGN STATUS RELEASED	REV. B
DRAWN BY S. THAO		DATE 4/27/2009	SCALE 2:3
		SIZE B	SHEET 1 OF 1