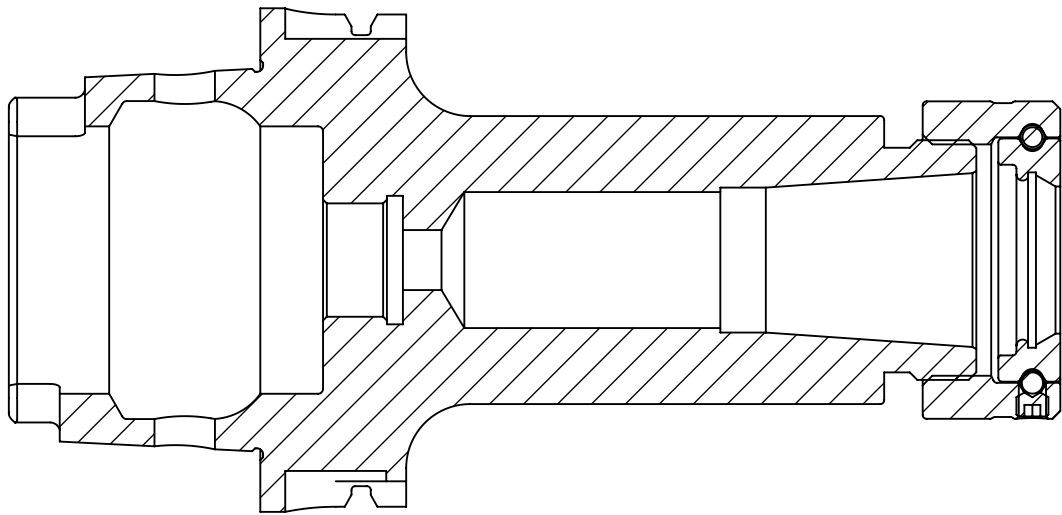
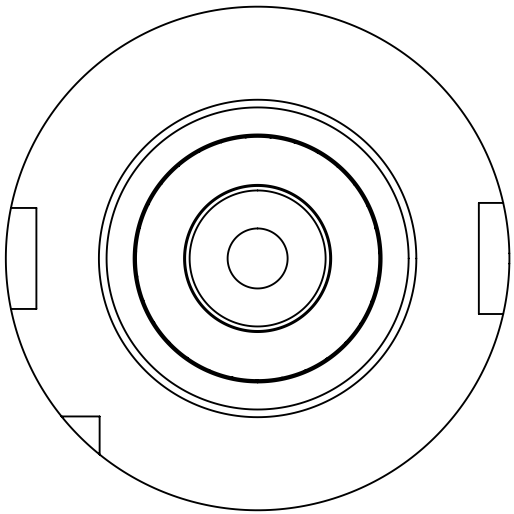
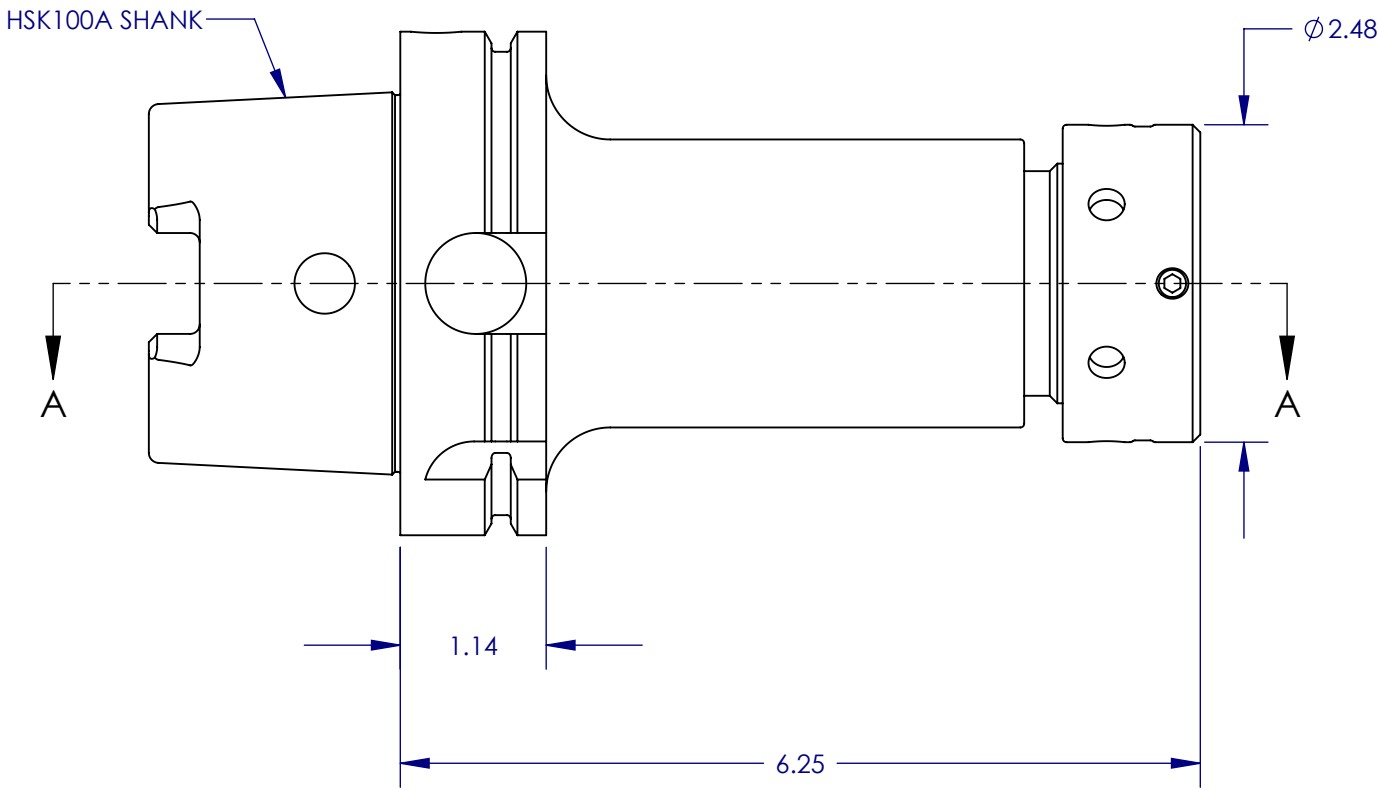
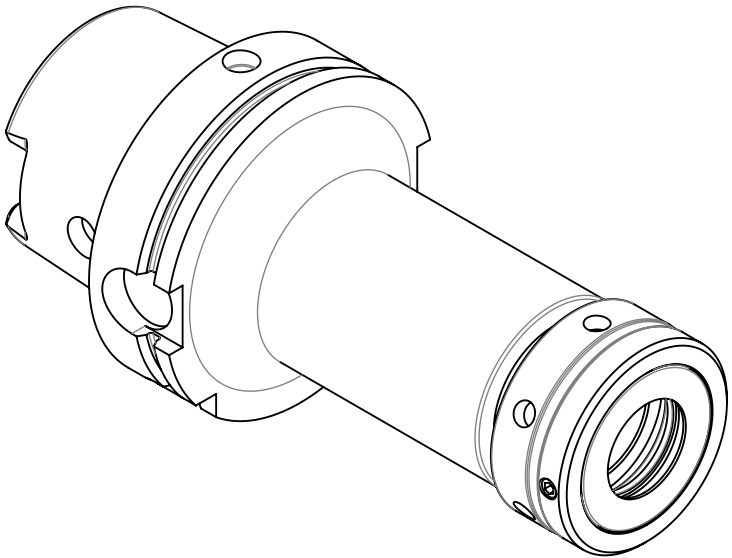



DRAWING NUMBER		REVISION		DESCRIPTION OF CHANGE		DATE		ECO NUMBER		APPROVED BY	
H6C4A1000		B		MODIFIED COMPONENT		2/28/2012		-		S. THAO	



SECTION A-A



PART NUMBER		DRAWING NUMBER	
H6C4A1000		H6C4A1000	
		HSK100A TG100 CC 6.250 AGL	
		MODEL STATE FINISHED ASSEMBLY	
		DESIGN STATUS RELEASED	REV. B
DRAWN BY P. LOR		DATE 5/19/2010	SCALE 2:3
		SIZE B	SHEET 1 OF 1