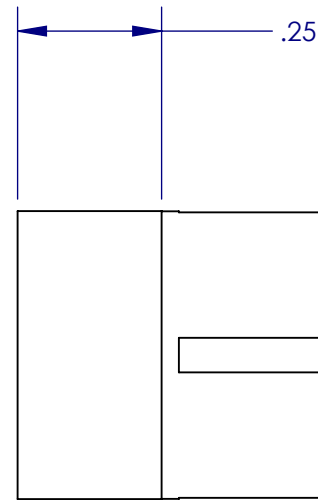
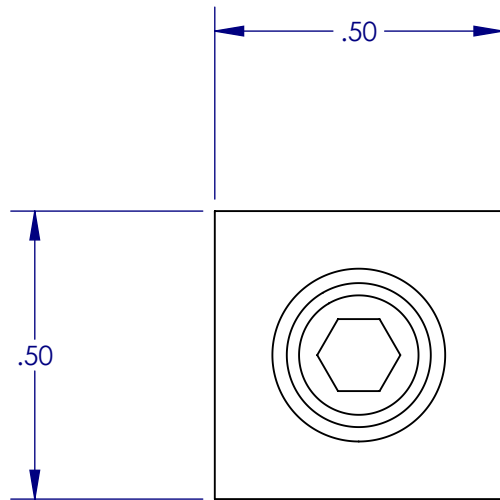
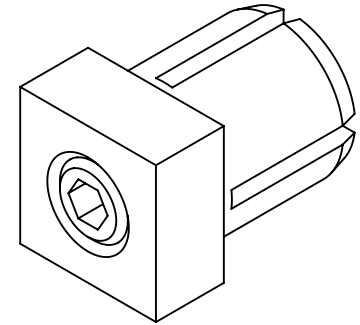



8	7	6	5	4	3	2	1
DRAWING NUMBER XSDK-1250			REVISION B	DESCRIPTION OF CHANGE MODIFIED COMPONENT	ECO DATE 2/29/2012	ECO NUMBER -	APPROVED BY S. THAO



PART NUMBER XSDK-1250		DRAWING NUMBER XSDK-1250	
		DESCRIPTION 1.250 SMH DRIVE KEY	
		MODEL STATE FINISHED COMPONENT	
		DESIGN STATUS RELEASED	REV. B
DRAWN BY S. THAO	DATE 6/1/2009	SCALE 1:1	SIZE A
		SHEET 1 OF 1	